

An aerial photograph of the Bilbao Port area, showing the harbor, industrial facilities, and surrounding mountains. The image is overlaid with a blue geometric shape containing the title text.

SUSTAINABILITY REPORT 2024 EXECUTIVE SUMMARY

Bilbao Port Authority

1. INSTITUTIONAL DIMENSION

Introduction and sustainability strategy of the Port Authority

The Bilbao Port Authority Sustainability Report for 2024, published in accordance with Royal Legislative Decree 2/2011, reflects the Port Authority's commitment to **four key aspects** of sustainability: institutional, economic, social and environmental.

These reports have been published annually by the Port Authority since 2010, enabling delivery of the corresponding Strategy Plans to be monitored and to compare the Port's level of quality with the other Port Authorities that report to the Spanish State Ports Authority.

Statement by the President; Activity Report 2024

Iván Jiménez Aira

- Stand-out performance in delivery of the **Strategy Plan 2023-26**, based on three premises: to be a **green, competitive and responsible port**.
- In terms of economic sustainability, figures for freight traffic stood at **34.44 million tonnes, 5%** up on 2023 figures and higher than the average for the 48 Spanish ports considered to be of general interest, which stands at +2.7%.
- Business revenue in 2024 rose to **76.74 million euros**, up **11.54%** on the previous year.

- Breakdown of performance by traffic-type in 2024 was as follows:
 - * **Bulk liquids (containers):** +4.48%
 - * **Bulk solids:** +10.12%
 - * **Breakbulk:** +3.84%
 - * **Container traffic:** 458,000 TEUs (-6.81%)

Passenger traffic reached record levels, with more than **80 calls by cruise ships**.

- Work has begun on the **second phase of the extension of the central breakwater** to create new space for strategic projects. We also remain committed to rail transport, with **27%** of containers shipped in or out of the port by rail, enabling Bilbao to maintain its leading position in terms of rail usage in the port system.
- With regard to the environment, highlights include the approval of investment for the **electrification of the docks, known as OPS (Onshore Power Supply)**. Additionally, air quality has been improved, our carbon footprint has been reduced and we continue to work on developing a self-sufficient renewable energy model, in which solar, wind and green hydrogen energy play a key role.
- In the social context, the **Ezagutu Portua** programme has brought the port closer to the general public, with visits to the port by:
 - 3,592 school children;
 - 918 adults on weekend visits; and
 - 2,847 university and vocational training students (tripling the previous year's figures).

Port Authority Strategy Plan 2023-26

The objectives of the Strategy Plan 2023-26 of the Bilbao Port Authority are focused on boosting the competitiveness of the customers of the Port of Bilbao, contributing to the sustainable social and economic development of its area of influence, making Bilbao the port of reference on the Spanish peninsula for logistics chains with the Atlantic axis, and helping to improve the competitiveness of the economic and business fabric by providing value-added and sustainable services.

Bilbao PORT **B**

Strategic commitments to 2026

1

Environmental benchmark

2

Smart specialisation and value creation

3

Differential services and infrastructure

4

People, knowledge and talent

5

Economic and financial sustainability

Decarbonisation:
40% reduction in CO₂ emissions

OPS: 100% of docks with power lines

Self-generation of renewable energy:
30 MW installed

Double Ro-Ro traffic:
80,000 ITUs/year

+30% containerised traffic

+2 Mt bulk traffic

Digitalised port:
Predictive one-stop shop

Completion of strategic works:
Central breakwater, AZ1, etc.

Responsive and customer-focused port

Talent: new capabilities

Financial stability:
(NBD/EBITDA) – Around 1x

Investment drive:
200 million euros (2023-2026)

The **mission** of the Port of Bilbao is to drive the competitiveness of its customers, contributing to the sustainable social and economic development of the port’s catchment area.

The values underpinning the mission are customer focus; excellence, ethics and professionalism; teamwork; commitment to people; and social responsibility.

The **Strategy Plan 2023-26** is shaped around three key concepts:

1. A Green Port

To provide guidance and support for the customers of the port in addressing the impact of the energy transition.

2. A Competitive Port

To sustain the competitiveness of the region’s industry, adapting infrastructure and services to its needs and requirements.

3. A Responsible Port

To increase our efforts to contribute to the social and economic environment, ensuring the port’s value to society.

The Strategy Plan focuses on **5 key strategic areas** (3 external and 2 internal)

Key Areas of the Strategy Plan 2023-26

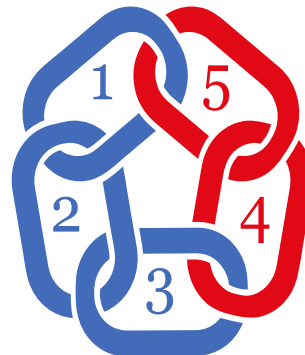


1. An environmental benchmark

To drive the energy transition of the port, with environmental sustainability as a critical factor for competitiveness.

2. Smart specialisation and value creation

To make the port of Bilbao the benchmark for Atlantic traffic, while capturing new growth opportunities and maximising value creation for the region.



5. Economic and financial sustainability

To ensure the economic and financial balance of the organisation is maintained.

4. People, knowledge and talent

To develop the future capabilities of the Port Authority of Bilbao, ensuring knowledge transfer and attracting new talent.

3. Differential services and infrastructure

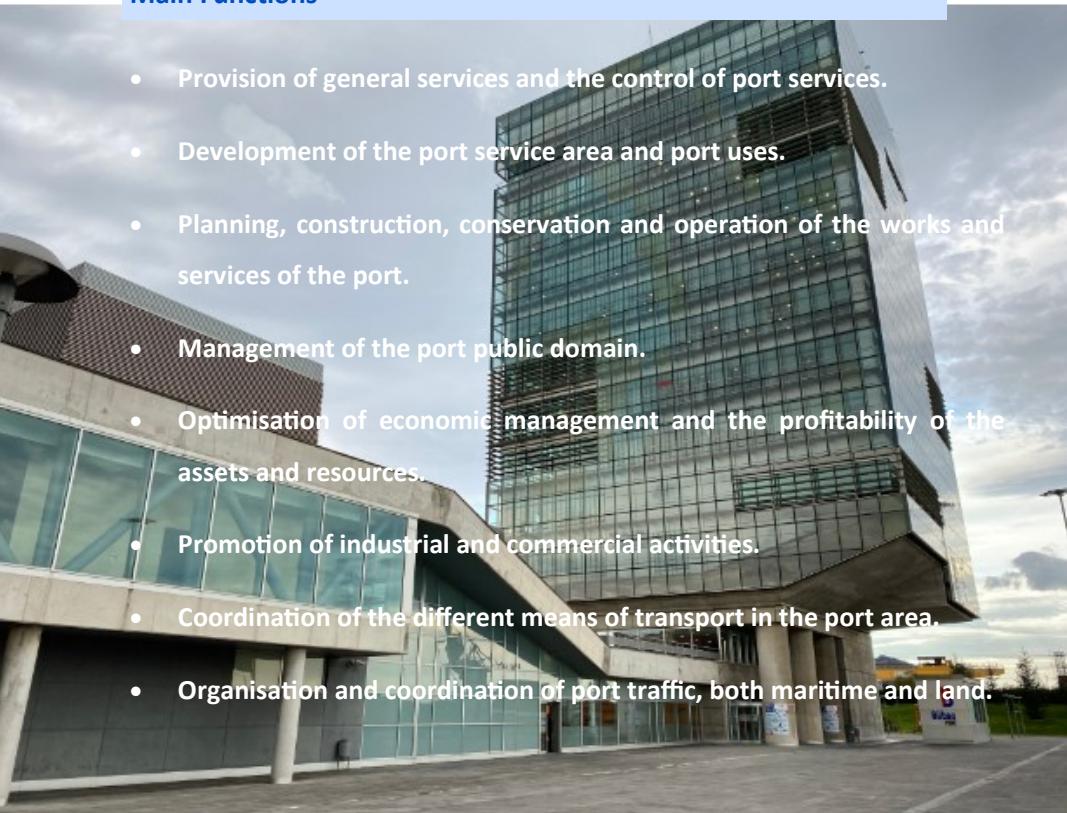
To consolidate and improve the portfolio of high added-value services, focused on generating value for the port’s customers (digitalisation and infrastructure).

Functions and Legal Form

The Bilbao Port Authority is a public law entity with its own legal personality and assets. It is governed by specific legislation under Royal Legislative Decree 2/2011, of 5 September, which approves the Consolidated Text of the Law on Ports and the Merchant Navy, and acts subject to private law, except in the exercise of the functions of public authority attributed to it by law.

Main Functions

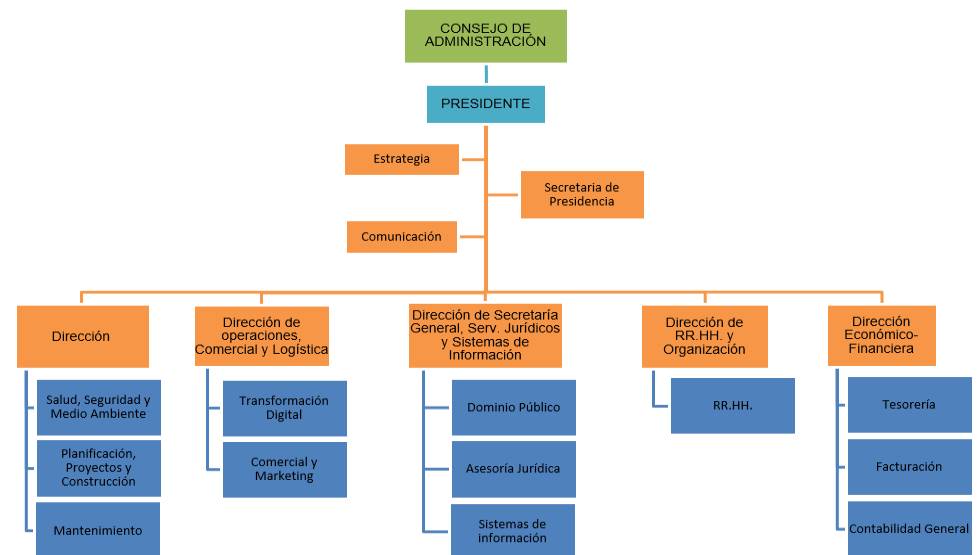
- Provision of general services and the control of port services.
- Development of the port service area and port uses.
- Planning, construction, conservation and operation of the works and services of the port.
- Management of the port public domain.
- Optimisation of economic management and the profitability of the assets and resources.
- Promotion of industrial and commercial activities.
- Coordination of the different means of transport in the port area.
- Organisation and coordination of port traffic, both maritime and land.



Governance and Quality Management

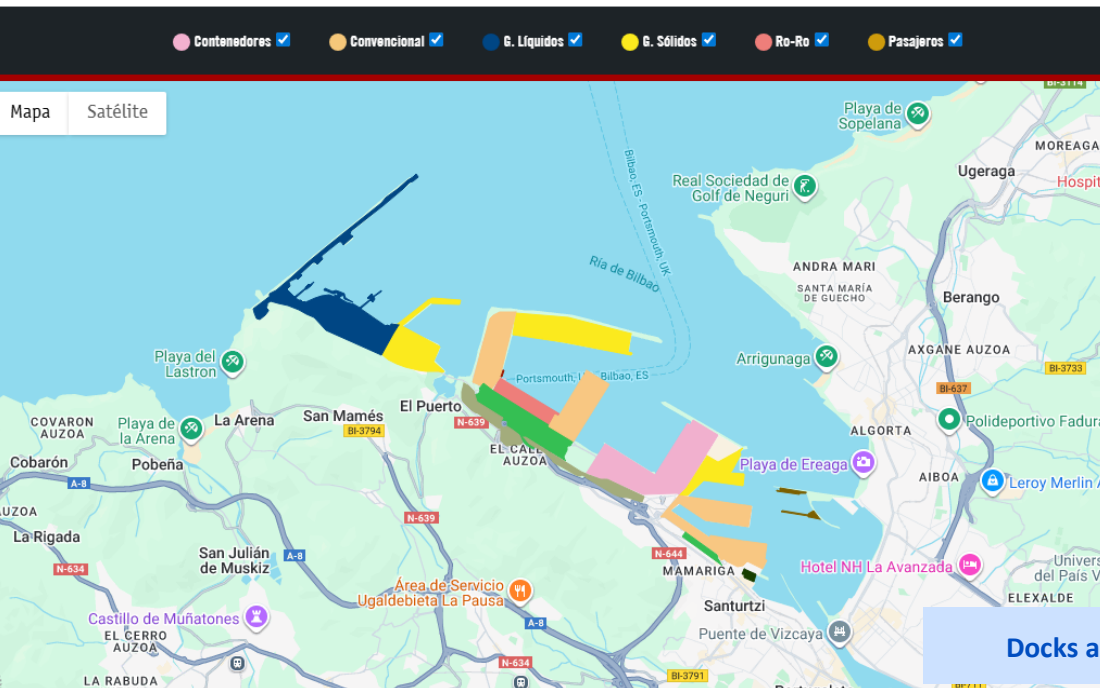
The governing bodies of the Bilbao Port Authority are the President, the General Manager and the Board of Directors.

- **President:** appointed by the Autonomous Region of the Basque Country, the President represents the Port Authority and its Board, convenes board meetings, establishes general management guidelines and submits the Business Plan.
- **General Manager:** appointed by the Board of Directors at the proposal of the President, the General Manager is responsible for the day-to-day running and management of the organisation.
- **Board of Directors:** the governing body that administers the port, approves budgets and accounts, authorises investments, grants concessions and promotes free competition.



Management and Quality Systems

- ⇒ Integrated Management System certified under **ISO 9001, 14001 and ISO 45001** standards.
- ⇒ In 2024, the Port Authority obtained AENOR **certification** as a healthy organisation (**SIGOS**) and is in the process of obtaining ISO 27001 certification in Information Security.
- ⇒ Renewal of **EMAS III certification (Eco-Management and Audit Scheme)**.
- ⇒ The **carbon footprints** of the Bilbao Port Authority for the years 2015, 2018, 2022, 2023 and 2024 have been registered in the Carbon Footprint, Offsetting and CO2 Absorption Projects Register, obtaining the "Calculation" seal.
- ⇒ The Port of Bilbao is a member of the **EcoPorts** network of green ports.



Docks and terminals by cargo type

Infrastructure

The port has **20 km. of docks** with draughts of up to 32 metres and **400 ha. of land area**.

- ⇒ **Active cargo docks:** 15,483 metres.
- ⇒ **Land area under concession:** 3,980,659 m².
- ⇒ **Ro-Ro ramps:** 6 in total, 4 of which are in use.

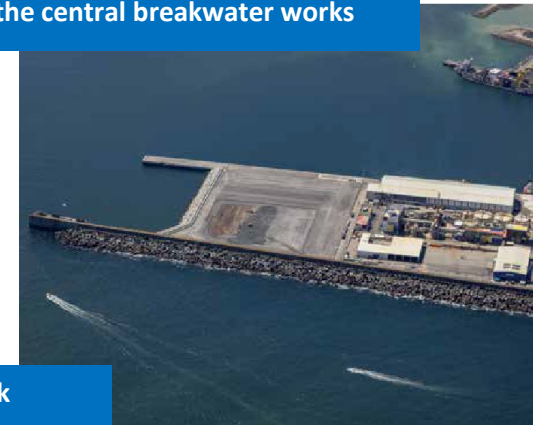
Seawalls	Length (m)
Punta Lucero	2,498
Zierbena	3,150
Santurtzi breakwater	1,200
Algorta breakwater	1,072

Infrastructure projects in 2024

1. **Phase II of the central breakwater construction works.** Awarded for 55.1 million euros, the works have a completion period of 26 months, generating 31.2 hectares of new surface area and 1,011 linear meters of new docks. The landfill will come from maintenance dredging and surplus materials from nearby construction sites, in an example of circular economy.
2. **New sewerage system.** The first phase has been completed and the second phase is now underway. A joint project with URA and the Bilbao Bizkaia Water Consortium to eliminate 112 wastewater treatment plants using a vacuum system. The cost of the first two phases is 20 million euros, co-financed by EU Next Generation funds.
3. **Commissioning of the A-Z0 Dock.** 50,000 m² of new surface area and a new berthing line of around 250 linear metres for bulk solids. The works have recovered waste from electric furnace steelworks and reused it as course aggregates, thus avoiding having to mine the equivalent amount of material (around 20,000 tonnes) from quarries.



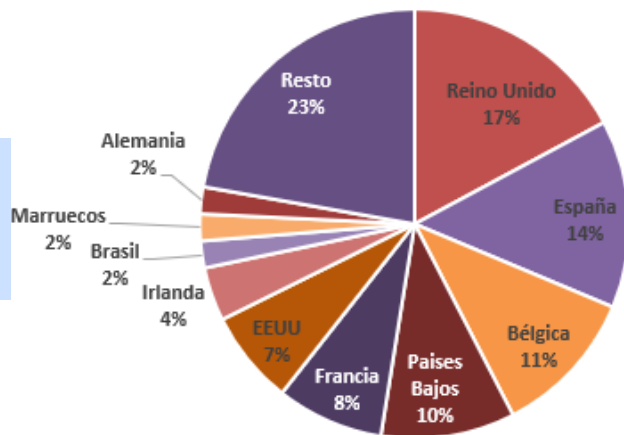
Start of Phase II of the central breakwater works



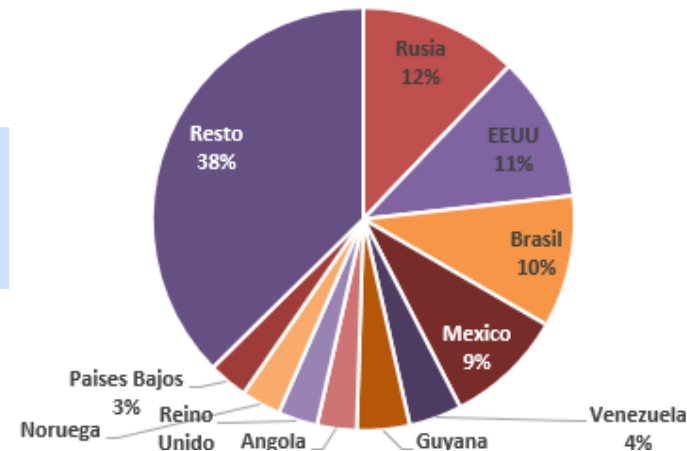
A-Z0 Dock

Markets served in 2024

Export Markets



Import Markets



Trend in traffic by cargo type

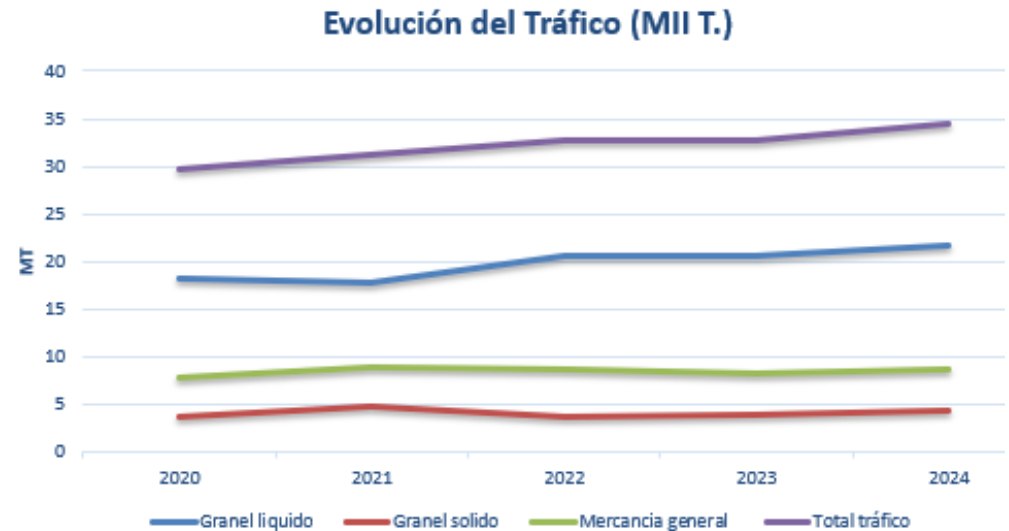
Trend in traffic over the last four years expressed in millions of tonnes (MT) handled, as well as the percentage share of each cargo type in relation to the total.

Cargo type	2024		2023		2022		2021		2020	
	MT	% total	MT	% total	MT	% total	MT	% total	MT	% total
1. Total bulk liquids	21.6	63	20.6	63	20.5	63	17.7	57	18.2	61
2. Total bulk solids	4.3	12	3.9	12	3.7	11	4.7	15	3.7	12
- Containerised general cargo	5.1	15	5.2	16	5.4	16	5.7	18	5.2	18
- Other general cargo	3.4	10	3.0	9	3.2	10	3.1	10	2.6	9
3. Total general cargo	8.5	25	8.2	25	8.6	26	8.8	28	7.7	27
TOTAL TRAFFIC (1+2+3)	34.4	100	32.8	100	32.8	100	31.2	100	29.6	100

Traffic in 2024 was up **5%** on 2023 figures.

Figures for **passenger traffic** in 2024 increased considerably:

- * Ferries (Brittany Ferries): 147 calls with a total of 144,455 passengers on board, almost **16%** up on 2023 figures.
- * Cruise ships: 81 calls, with a total of 137,477 passengers on board.
- * Total: 281,932 passengers, **4%** more than in 2023.



Main customers in 2024

50.35 % of the port's turnover in 2024 came from its five main customers, as shown in the following table:

Total turnover in 2024 (euros)	76,738,382.56
Total 5 main customers 2024 (euros)	38,637,319.1
%	50.35 %

Type of service	Number of companies
Stevedoring	4
MARPOL	1
Pilotage	1
Towing	1
Mooring	1

Number of companies operating in the port under concession or authorisation

Type of agreement	Number of companies 2024
Concession	93
Authorisation	89
Total	157

Main sectors and relevant activities (millions of tonnes)

Energy	20.85	Agri-food	1.7
Crude oil	9.8	Soya beans	1
Refined products	7.15	Alcoholic beverages	0.4
Other oil derivatives	0.5	Others	0.3
Natural gas	3.4	Paper and pulp	0.5
Iron and steel	2.3	Machinery	0.7
Chemical	2.9	Vehicles and parts	0.2
Construction materials	0.6	Others	0.4
TOTAL	30.15		



Land area eligible to be awarded under concession (m ²)	4,340,917
Land area under concession (m ²)	3,980,659
RATIO (%)	91.70 %

Current access by road and rail

- A dual carriageway links the Santurtzi Port Area with the **A-8 motorway** and, from there, with the motorway network that connects Bilbao with Santander, Madrid, Zaragoza and the French border.
- The **Bilbao South Metropolitan bypass**, otherwise referred to as the **Supersur**, a road specially designed for heavy traffic with improved access to the port.
- The **A-68 motorway** links the port with Zaragoza and Barcelona, and the **A-1 motorway** links the port with Madrid, with connections to Lisbon and the cities in the south of Spain.

Rail Intermodality

- **Share of container transport by rail:** 27% in 2024.
- **Trains in 2024:** 4,017 trains entered or left the port facilities.
- **Dry port network:** 22 dry ports in provinces such as Araba, Barcelona, Burgos, Madrid, Zaragoza, etc.
- **On-site Container Express Train terminal:** 120,500 m² with 8 sorting tracks and 6 terminal tracks.
- **Participation in depots:** the Bilbao Port Authority participates in 7 depots and is the sole owner of the Arasur logistics platform (Araba) and the Pancorbo terminal (Burgos).

Trend in traffic by road and rail (% of total):

Millions of tonnes	2024		2023		2022	
Road	92%	14.6	89%	12.3	89%	11.8
Rail	8%	1.2	11%	1.5	11%	1.5
Road + Rail	100%	15.8	100%	13.8	100%	13.3

- **Ro-Ro traffic.** Operated by Brittany Ferries and Finnlines, Ro-Ro traffic accounted for **14.1%** of breakbulk cargo in 2024.



Map of road links



Map of rail links

Communication and Institutional Commitment

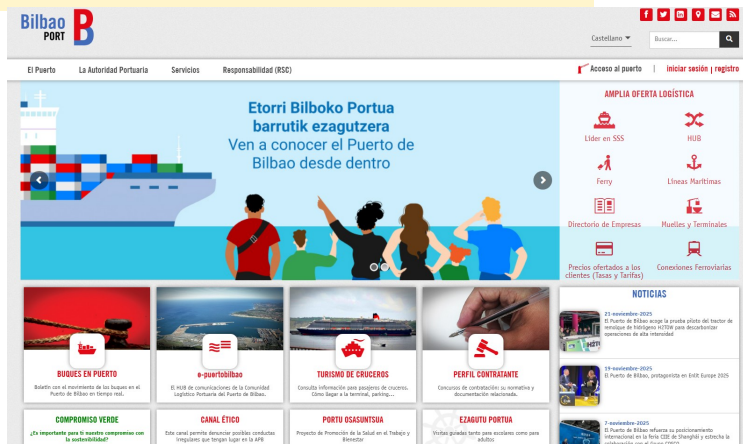
The Bilbao Port Authority identifies and interacts with multiple **stakeholder groups**, including its people, suppliers, the port community (UNIPORT), shipping companies, shippers, public authorities and society at large.

Communication is direct and supported by Uniport to coordinate working groups.

Key Associations

The Bilbao Port Authority is an active member of organisations such as Uniport Bilbao, the Mobility and Logistics Cluster of the Basque Country, ESPO, IACP, IAPH and Cruise Europe, amongst others.

The website www.bilbaoport.eus of the Port Authority is updated constantly with comprehensive information on the port and its services.



R&D&I Projects

The Department of Innovation, together with Bilbao PortLab, the port innovation hub set up in 2019, has rolled out **51 projects**.

In 2024, five new projects received funding from the Ports 4.0 program, with a total investment of **344,015 euros**.

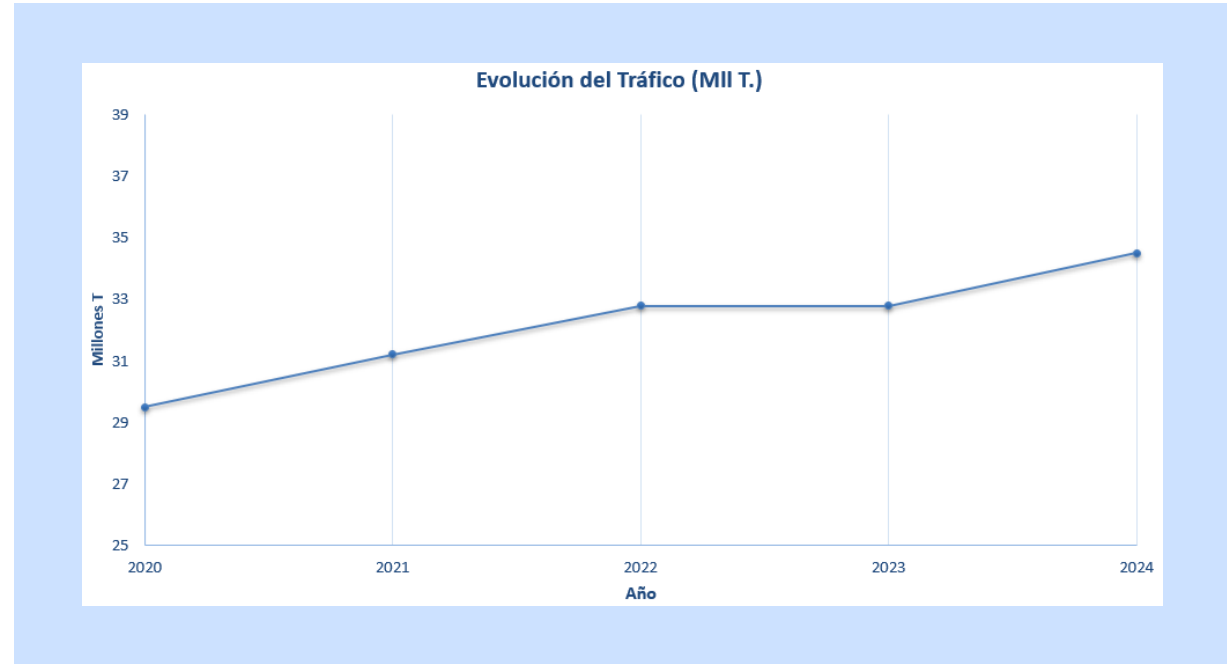
- **Zero Gravity:** digital twins to monitor air quality.
- **Ocean Ecostructures:** calcium carbonate panels to promote wildlife and flora.
- **Econcrete:** concrete blocks to analyse how biodiversity evolves.
- **Vicomtech + Toro y Betolaza:** simulation of automation at the terminal.
- **Ekinbarri:** methodology for business transformation.

Bilbao Port and River Foundation: made up of nine coastal municipalities, the Foundation promotes port-city integration, organising events such as the Kai Jai (Port Open Day), internship programs and supporting cultural and sporting activities.

2. ECONOMIC DIMENSION

Economic Policy and Trend

- The economic policy of the Bilbao Port Authority is based on self-sufficiency and a reasonable level of profitability.
- Trend in port traffic is a good indicator of both internal aspects and the relationship between the port and its surroundings.
- Figures for port traffic show a recovery and growth trend following the crisis in 2020.



Overall trend in traffic

Year	2014	2015	2016	2017	2018	2019	2020	2021	2022	2023	2024
Millions of tonnes	30.8	32.4	32.1	34.2	35.6	35.4	29.5	31.2	32.8	32.8	34.44



Economic-Financial Position (2024)

Result for Financial Year 2024 *	14,299,000 euros
Average Net Non-Current Assets	920,117,000 euros
Annual Return	1.55%
Net Turnover	76,738,000 euros
EBITDA	39,022,000 euros (up 17.1% on 2023 figures)
EBITDA / Tonne	1.13 euro/tonne
Debt Service	13.50%
Inactive Assets	8.13% of average net non-current assets
Ratio Operating Expenses / Income	89%

* After-tax profit or loss for the year, excluding deterioration and profit or loss on the disposal of fixed assets and other extraordinary results, as well as the balance of the Inter-port Compensation Fund contributed or received.

Trend in EBITDA

	2020	2021	2022	2023	2024
EBITDA (thousands of euros)	27,249	32,381	30,826	33,320	39,022

Trend in Operating Expenses in relation to Operating Income

	2020	2021	2022	2023	2024
Operating expenses (thousands of euros)	63,027	60,512	63,640	65,518	68,174
Operating income (thousands of euros)	58,960	63,157	64,910	68,760	76,738
RATIO (%)	106	96	98	95	89

Investment Level and Structure

Investment Indicators (2024):

Public investment (thousands of euros)	31,775		
Average net non-current assets (thousands of euros)	920,117	Cash flow (thousands of euros)	40,189
RATIO (%)	3.45	RATIO (%)	79

Business and Services

Data on income from occupancy and activity taxes reflect the trend in turnover from concessions.

Income from occupancy and activity fees (as a % of net turnover)

	2024
Net Turnover (thousands of euros)	76,738
Occupancy Tax (thousands of euros)	27,416
Ratio (Occupancy Tax / Net Turnover)	35.73
Activity Tax (thousands of euros)	6,711
Ratio (Activity Tax / Net Turnover)	8.74

Productivity of Infrastructure (2024)

Total tonnes handled = 34,441,525

Concession area (m ²) (thousands)	4,340,917
Tonnes/m ²	7.93
Linear metres of active dock	15,486
Tonnes/m	2,224

Value Generated and Productivity

Productivity indicators correlate economic results to the workforce.

Trend in Productivity per Employee

Average annual workforce	264	258	265	275	278
Indicator (thousands of euros/employee)	2020	2021	2022	2023	2024
Net turnover/ average number of employees	223	245	242	250	276
EBITDA / average number of employees	103	125	116	121	141

3. SOCIAL DIMENSION

People of the Port Authority

The Bilbao Port Authority has deployed a model of Management by Competences to provide for flexibility in people management.

Data on people employed by the Port Authority (2024)

Not covered by collective bargaining agreement	33
Covered by collective bargaining agreement	245
TOTAL	278
% people on temporary contracts	14.75%
% people covered by collective bargaining agreement	85.6%
% Women	28.42%
% people on permanent contracts over 50 years old	54.44%
% people on permanent contracts under 30 years old	1.48 %

Health and Safety at Work. The Bilbao Port Authority has its own Risk Prevention Service and a Management System certified under **ISO 45001** standards.

The Port Authority is a signatory of the Luxembourg Declaration and is taking forward a project entitled "**Portu Osasuntsua**", which has won a series of awards and accolades including, in 2023, the diploma as a Healthy and Sustainable Company of the National Institute for Health and Safety at Work.

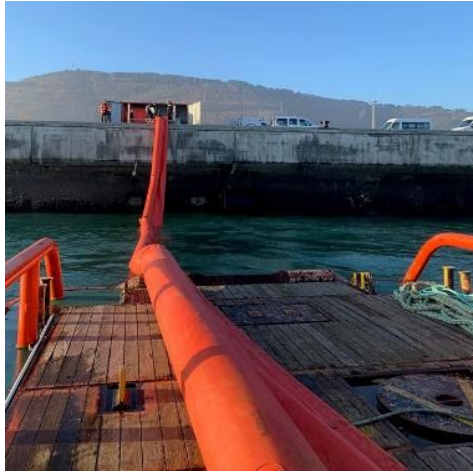
Training (2024)

Number of people taking part in training programmes	208
Total hours of training	16,067
Average number of training hours per person (total number of people)	46.64
Training hours in Management by Competences	35
Training hours in Occupation Risk Prevention	750 (2.7 hours/person)

Accident Rate Statistics (2024)

Total number of accidents	0
Severity rate	0
Frequency rate	0
Cumulative absenteeism rate	6.91
Number of medical visits	368





Training in occupational risk prevention, expressed as total number of training hours divided by the total number of people.

$$750 \text{ hours} / 278 \text{ people} = 2.7$$



Number of exercises and drills in safety and protection	17
---	----

Employment and Safety at Work in the Port Community

- **Specifications:** port services stipulate that the service provider shall comply with all applicable legislation on health and safety at work, shall have sufficient human and material resources to enable operations to be performed safely and shall provide continuous training for its people.
- **Coordination of Business Activities:** through a web portal (CTAIMA).
- **ISO 45001 certification:** 11 port companies have an ORP system certified under ISO 45001 standards.

Relations with the Local Community

The **Bilbao Port and River Foundation**, comprising nine riverside towns, is the main instrument for promoting relations between the port and the city.



3. ENVIRONMENTAL DIMENSION

The Bilbao Port Authority considers environmental management a priority activity, committing itself to protecting the environment, compliance with all applicable legislation and minimising impacts. In 2024, no sanctions were imposed on the Port Authority for non-compliance with environmental regulations.

Environmental Strategy and Management

Highlights in 2024

- **EMAS III certification:** renewed for the tenth year running.
- **BilbOPS Project:** start of the first phase (Dock A-5 for RO-RO vessels) for the electrification of the docks (OPS), with an investment of 4.7 million euros and a 3.9 million euro grant from the Recovery and Resilience Facility. <https://bilbops.bilbaoport.eus/>
- **Good Environmental Practice Agreements:** the signatory companies have invested around **6,800,000** euros in 2024 in process improvements, such as the acquisition of hybrid and/or more efficient machinery, the reduction of diffuse particle emissions by purchasing new equipment, and the installation of PV solar panels.

Financial Resources (2024):

Expenditure on cleaning common land areas and the water surface: 612,189.57 euros

- ⇒ **Maintenance of the environmental management system:** 4,695 euros
- ⇒ **Environmental monitoring and analysis:** 1,160,000 euros (1.70% of total expenditure)

Expenditure on ground cleaning	1,569,934.17	euros
Surface service area	4,340,917	m ²
Expenditure / Surface area	0.36	euros/m ²
Expenditure on water cleaning	42,255.40	euros
Zone 1 Surface area	19,196,000	m ²
Expenditure / Surface area	0.002	euros/m ²

Air Quality

The network of air quality monitoring stations of the Bilbao Port Authority comprises an automatic weather station, two fixed measuring booths and a series of low-cost sensors, in addition to the resources provided by the Basque Government.

The main emission sources (point and diffuse) in the port are those related to the storage of powdery materials in the open air, heating stacks, and chimneys of the companies operating in the industrial area between the Port of Santurtzi and Punta Lucero.

Network of air quality monitoring stations and measurements taken



Results on Air Quality (2024):

- **Settleable Particles:** 159 mg/m²day (Santurtzi) and 221 mg/m²day (breakwater), below the threshold limit of 300 mg/m²day.
- **PM10 Particles:** the annual threshold limit was not exceeded at any of the measurement stations. In 2024, the average daily threshold value was only exceeded on 4 occasions, considerably lower than the 35 permitted.
- **PM2.5 Particles:** the annual threshold limit was not exceeded at any of the measurement stations.
- **SO₂ and NO₂:** the threshold values for the protection of health and vegetation were not exceeded.
- **Complaints:** no complaints regarding air quality were received in 2024.

	Propiedad ¹	CONTAMINANTES					METEOROLOGÍA ²						
		P.Sed.	NO ₂	PM ₁₀	PM _{2,5}	SO ₂	Ruido	DV	VV	T	H	P	
CALIDAD DE AIRE	Contradique	APB	X		X								
	Santurtzi	APB	X		X	X	X						
	Las Arenas	APB		X	X		X						
	Meteo	APB						X	X	X	X	X	
	Santurtzi	GV		X	X	X	X		X	X			
	Algorta	GV		X	X	X	X		X	X	X	X	X
	Terminal cruceros	APB	X										
	Zierbena	GV		X	X				X	X	X	X	X
RUIDO	Centro de Control	APB						X					
	Barrio El Puerto	Particular						X					

Water Quality

Water quality is one of the aspects that require the closest monitoring in a port due to the multiple and varied factors involved. The actions taken as a result of the application of the **Water Framework Directive** to the state legal system will entail greater monitoring of water quality and, consequently, an increase in the budget earmarked for this purpose.

- **Port of Bilbao Biomonitoring Plan:** rolled out in collaboration with the University of the Basque Country. An annual study is conducted to analyse and assess the ecological status of water in the port environment.
- Phase I of the new vacuum sewerage system was completed in 2024, which will significantly reduce the number of points where sewage and industrial waste water is discharged into the sea. Work on Phase II is underway and will be completed next year.



Key data (2024):

- **Major spillages:** 0.
- **Negligible spillages (incidental):** 14.
- **Cleaning the water surface:** 85.46 tonnes of flotsam were collected in 2024.
- **Port Contingency Plan:** not activated in 2024.

Four drills were conducted to check the effectiveness of the plan.

New sewerage system



Noise

The Bilbao Port Authority monitors noise levels continuously and conducts four measurement campaigns per year.

2024 results reveal no significant impact in terms of noise from port activity, and all acoustic quality targets have been met.

- **Complaints:** no complaints relating to noise emissions were recorded in 2024.
- **Noise map:** the noise map was updated in 2023 on account of the expansion of the central breakwater.



2023 Noise Map (morning)

Waste Management

The Bilbao Port Authority has **three recycling centres** (two for inert waste and one for hazardous waste) on the port premises, where waste generated by the Port Authority itself in its buildings, workshops and facilities, waste from road cleaning and common areas, and waste generated in emergency situations are disposed of accordingly, depending on their nature.



- **Waste generated on land (by the Port Authority):** 48.08% of municipal solid waste was recovered.
- **Waste generated at sea:** a total of 26,492 m³ (15,951 m³ of hydrocarbons, 432 m³ of dirty water and 10,109 m³ of general rubbish) was collected and treated.

Waste type	Total amount collected during the year (in tonnes)	Percentage as a share of total collected
Inert	930	23.15 %
Non-hazardous	4,003	99.65%
Hazardous	13.95	0.35%

Management of Dredged Material

Total amount of dredged material in 2024: **49,005.40 m³**

All dredged material has been re-used as filler for the construction works of the central breakwater.

Eco-efficiency

One of the main environmental aspects taken into account in the sustainable management of the port is the consumption of natural resources. For this reason, every year the Bilbao Port Authority makes a thorough analysis of its consumption, in an attempt to define minimisation strategies in line with its environmental policy.

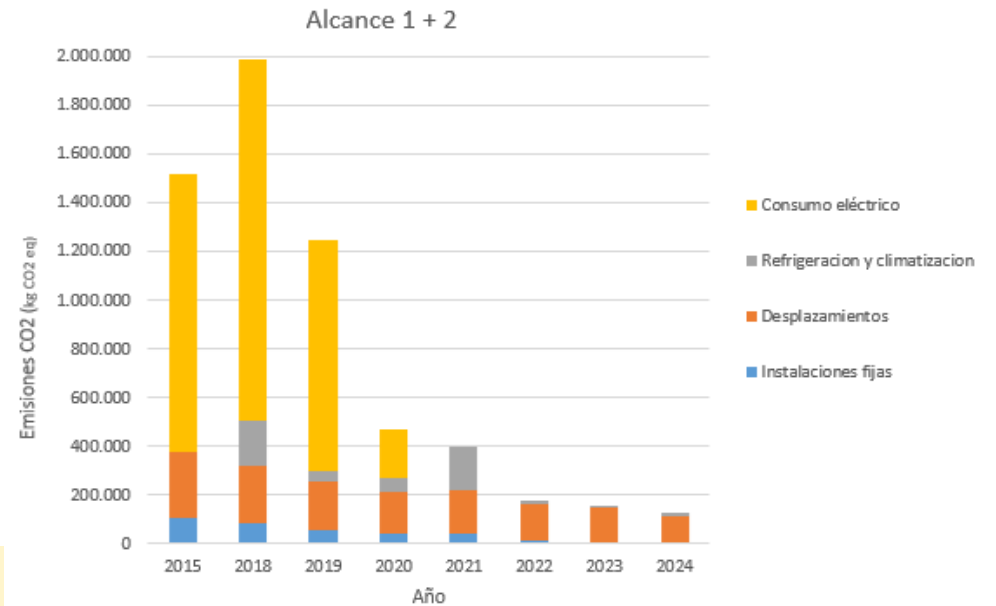
Port Authority Consumption and Efficiency

- **Water consumption:** 90,009 m³ (0.020 m³/m² of service area).
- **Power consumption:** 4,313,709 kWh (0.99 kWh/m²).

Since 2020, the electricity consumed by the Bilbao Port Authority is of **100% renewable origin**.

- **Fuel consumption:** 482,419 kWh (0.11 kWh/m²). fuel consumption has been reduced thanks to the replacement of a boiler with heat pumps and the renewal of the vehicle fleet with more sustainable models (8.30% of consumption now corresponds to electric vehicles).

Trend in CO₂ emissions by sources of consumption



Sources of consumption	%
Heating/Hot Water	1.09
Vehicles	66.54
Vessels	20.89
Generators	2.94
Forklifts	0.23
Electric vehicles	8.30
Total fuel consumption (kWh)	482,419
Surface service area (m²)	4,340,917
Ratio kWh/m²	0.11