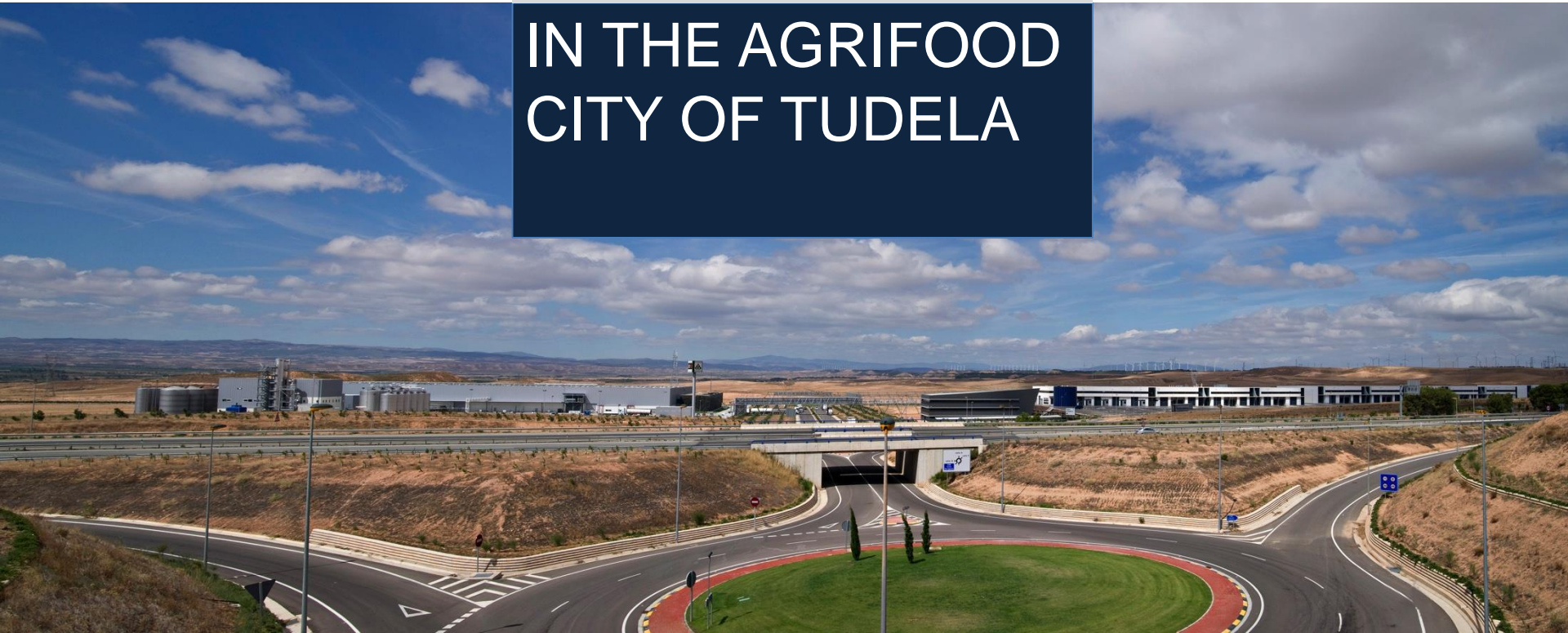




THE MULTIMODAL MARITIME PLATFORM IN THE AGRIFOOD CITY OF TUDELA





PMM

PLATAFORMA MARÍTIMO MULTIMODAL

THE MULTIMODAL MARITIME PLATFORM IN THE AGRIFOOD CITY OF TUDELA

Javier García

administracion@pmm.uno

deposito@pmm.uno

Executive President of

Plataforma Marítima Multimodal, S.L.



A Multimodal Tudela-Port of Bilbao Multimodal Platform why?

- To bring the Ribera del Ebro to the Port of Bilbao
- To offer a more competitive multimodal transport
- To optimise the container life cycle



228 km

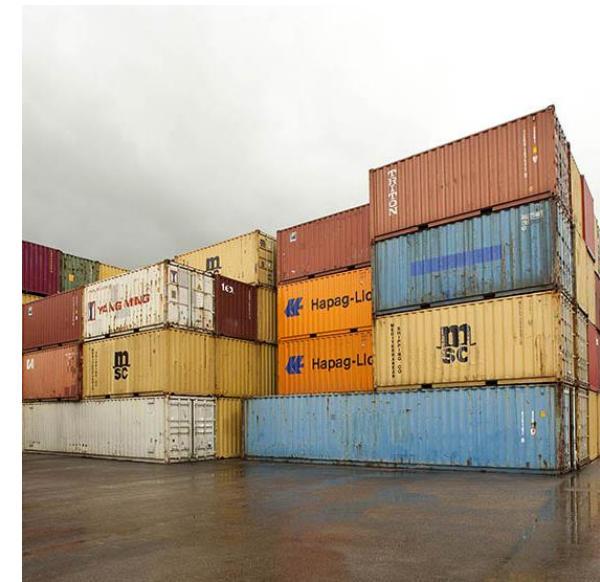
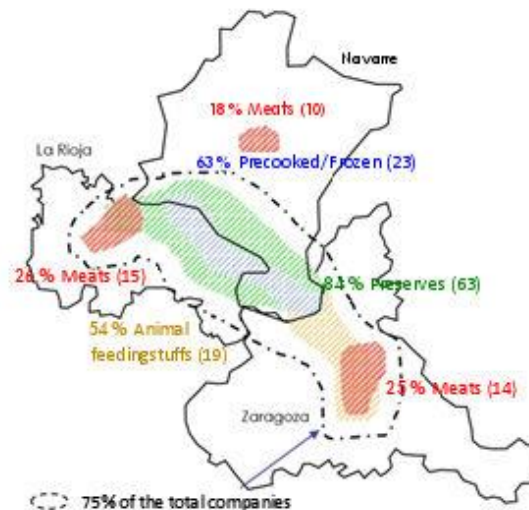




PLATAFORMA MARÍTIMO MULTIMODAL

But why in Tudela?

- Due to its geographical location
- As the Agrifood City has a pioneering infrastructure with agrifood and sustainable industrial park.
- Due to the importance of industrial and foreign trade sector of Navarre
- The agrifood sector accounts for 23% of the industrial VAB
- Powerful Influence Area (Navarre, La Rioja, Zaragoza)
- 75% of the agrifood companies in the reference area are located in the Ebro valley.





Description of the Multimodal Platform

- Plot size: **17.500 m²**
- Warehouse Size: **1.500 m²** with 2 loading/unloading docks and 10 connections for reefer containers
- Equipment: reachstacker with a capacity of up to 45 tonnes, machine for vacuums, 2 machines for container loading/unloading, and a 12 tonne auxiliary machine.





PLATAFORMA MARÍTIMO MULTIMODAL

About Us



- A group of nationwide logistics operator.
- Having a fleet of 500 trucks with all manner of platforms for all types of goods.



All things considered...

- Another further tool for more competitive logistics which we make available to our customers in order to market the Port of Bilbao.

